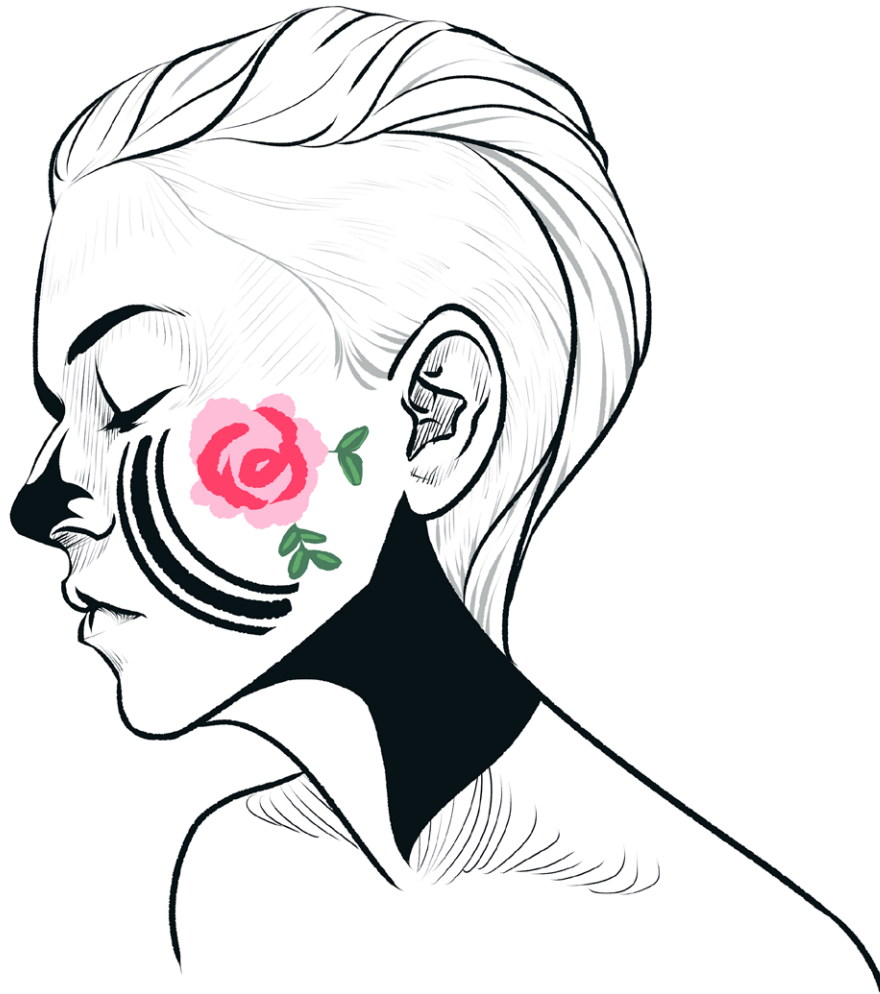


# ALISON GRAHAM

## Portfolio 2018

Digital artist, illustrator



Hello, I'm Alison Graham. I'm a freelance illustrator with a particular interest in picture book based illustration.

### **Recent work:**

Graduated with Bachelors' Degree in Visual Art from Sydney College of the Arts  
2015

Illustrated picture books for My Growing Values  
2015-2016

Editing and providing graphic design of sheep/goat drenching guides for Paraboss/UNE  
2016 Sept - 2017 Feb

Illustrations for Rock Sound Magazine  
2016 Dec - 2017 Feb

Graphic Design work for Morelly  
2017 Dec - 2018 onwards

# Fur And Feathers

## 2014 - 2015

For my final assessment work in my third year of study at Sydney College of the Arts, I decided to create a picture book.

The book draws on my personal experiences of growing up in Papua New Guinea, and the ways it has affected my worldview. The book reads like a typical children's book, with colourful stylised illustrations drawing from animated films from studios such as Disney and Ghibli, but is distinctly political in nature and draws on quite dark subject matter towards the conclusion of the book. It is not a children's book.

The book deals with my frustrations and emotions around issues in Papua New Guinea such as poor healthcare and infrastructure, violence against women, and corruption in government, contrasting against my vastly different experiences as an adult in Australia - using the medium of the picture book, which is a medium that I am passionate about and love working with.

# FUR AND FEATHERS



WORDS AND ILLUSTRATION BY ALISON GRAHAM

# My Growing Values

## 2015 - 2016

In April 2015, I was contacted by a pair of authors who were looking for a second illustrator to supplement their current illustrator's workload.

Ultimately, I ended up taking on their previous illustrator's remaining work, illustrating four out of five picture books; illustrating a book cover for one book; heavily editing all books and creating merchandise and colouring books to go with the main picture books.

The books are as yet unpublished - some changes have yet to be made, though the authors have put the project on hold for now, having both had children and other new projects in the time we were working on the books!

I'm optimistic that we will resume work on the books at some stage and have them published.

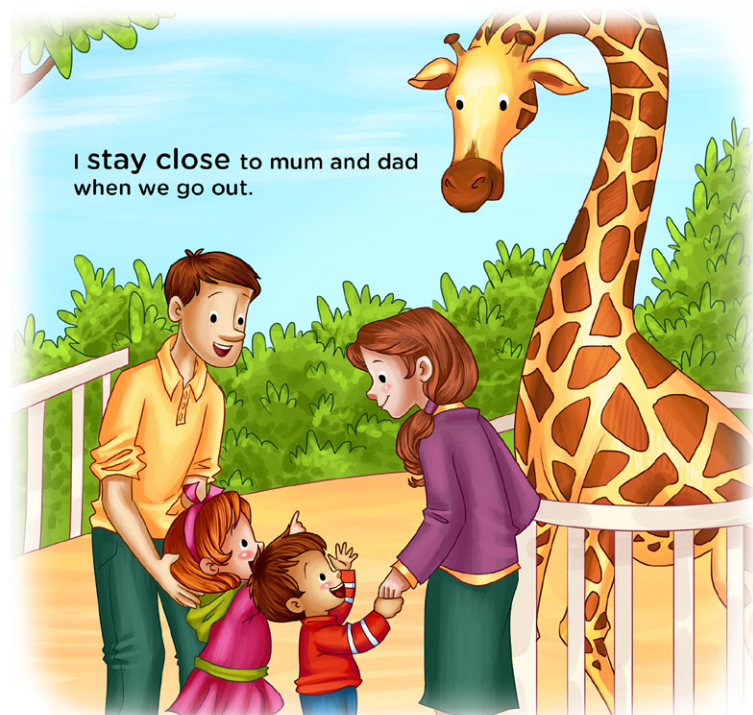


# I am Responsible

Susan L Stock &  
Gabriela Rosa



I take care of my belongings.



I stay close to mum and dad  
when we go out.

# Paraboss Drenching Guides

## 2016 - 2017

In August 2016, I was approached by the Paraboss team at University of New England to assist their graphic designer with drench decision guides for goats and sheep, based on Paraboss research on effective worm control in sheep and goats.

I assisted with typography, formatting, placement of elements, and map design/creation for each of the different regions of Australia each guide was designed for.

The key for this project was effective information communication that looked clear and readable, as well as aesthetically pleasing and well set out.





## GOATS

## QUESTIONS

**INSTRUCTIONS:** Follow the 'GO TO' letter or number on the right for each answer. Only answer the questions to which you are directed. When you are directed to a letter, this is the final recommendation (shown over the page).

START HERE



### 1 Are these does that will kid within 4 weeks? GO TO

- Yes, and the kidding paddock is low worm-risk (see definition<sup>1</sup> at bottom of page) A
- Yes, but the kidding paddock is NOT low worm-risk (see definition<sup>1</sup> at bottom of page) B
- No 2

### 2 Are these kids that will be weaned within 2 weeks?

- Yes, and the weaning paddock is low worm-risk (see definition<sup>1</sup> at bottom of page) C
- Yes, but the weaning paddock is NOT low worm-risk (see definition<sup>1</sup> at bottom of page) D
- No 3

### 3 On close inspection (with goats yarded or held tightly against a fence), are these goats showing signs<sup>4</sup> suggesting a worm infection?

- There are no signs of worm infection 4
- There are no signs of worm infection AND I have a recent worm egg count 4
- Yes, at least 2% of the mob are showing signs: including pale inside eyelids and gums, bottle jaw, lagging/collapse E
- Yes, only 1–2% of the mob are showing signs: including pale inside eyelids and gums, bottle jaw, lagging/collapse F
- Yes, some are scouring, but not showing the other signs listed above G

### 4 What 'length of protection' treatment type was last used?

- Persistent (mid-length and long-acting drenches, injections and capsules giving ongoing protection) H
- Short-acting (drenches with no ongoing protection) or the last treatment type is unknown 5

### 5 What type of WormTest results do you have?

- Worm egg counts and a culture 6
- Worm egg counts but no culture (consider a culture next time), however recent culture or experience suggests barber's pole worm 7
- Worm egg counts but no culture (consider a culture next time), however recent culture or experience suggests scour worms 8
- None I

*NOTE: If treatment was less than 3 weeks ago and you now have a positive result, your drench may be ineffective. Seek veterinary advice because a DrenchTest might be required.*

### 6 Is the percentage of barber's pole worm (*Haemonchus contortus*), shown in the larval culture, higher than 60%? GO TO

- Yes 7
- No 8

### 7 There are greater than 60% barber's pole worms.

In the table below, find the worm egg count threshold for the average goat condition of your mob and the condition of the pasture they will graze.

(If pasture<sup>2</sup> or goat condition<sup>3</sup> is unknown, use a worm egg count value of 800 epg).

Worm egg count (epg) thresholds for **barber's pole** worm

Goat condition <sup>3</sup> (or growth rate for weaners)	Pasture condition <sup>2</sup>		
	Poor	Moderate	Good
Poor	400	600	800
Moderate	600	800	900
Good	800	900	1000

**What is your worm egg count in relation to the threshold value?**

- My worm egg count is equal to or higher than the threshold value E
- My worm egg count is below the threshold value J

### 8 There are greater than 40% scour worms.

In the table below, find the worm egg count threshold for the average goat condition of your mob and the condition of the pasture they will graze.

(If pasture<sup>2</sup> or goat condition<sup>3</sup> is unknown, use a worm egg count value of 400 epg).

Worm egg count (epg) thresholds for **scour** worm

Goat condition <sup>3</sup> (or growth rate for weaners)	Pasture condition <sup>2</sup>		
	Poor	Moderate	Good
Poor	200	300	400
Moderate	300	400	500
Good	400	500	600

**What is your worm egg count in relation to the threshold value?**

- My worm egg count is equal to or higher than the threshold value E
- My worm egg count is below the threshold value J

## Definitions

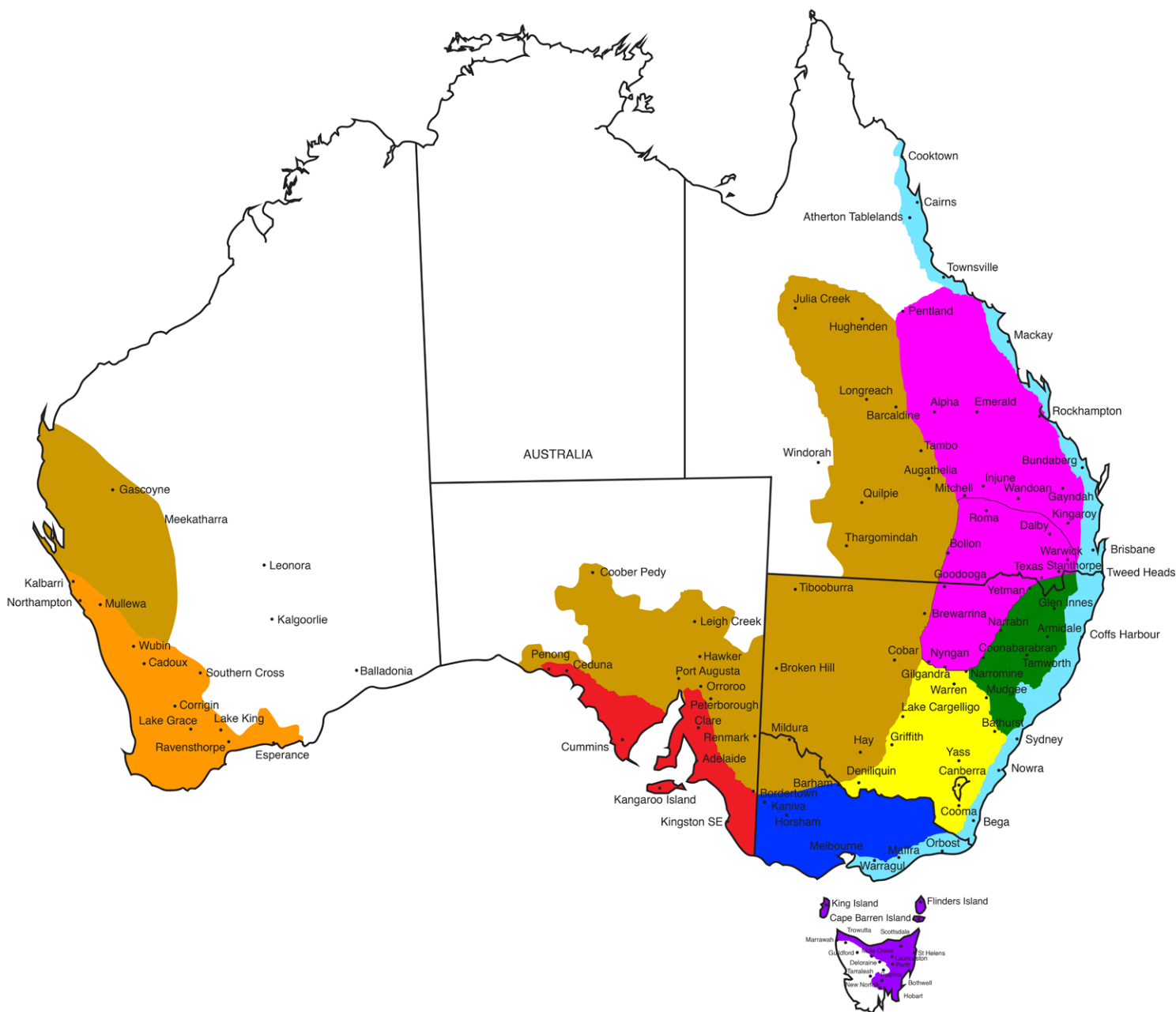
<sup>1</sup> Preparing low worm-risk paddocks involves preventing worm contamination on them prior to use; 3 months for a summer weaning paddock, and just the warmer months (daily max. temperature >18°C) in the 6 months prior to a spring kidding.

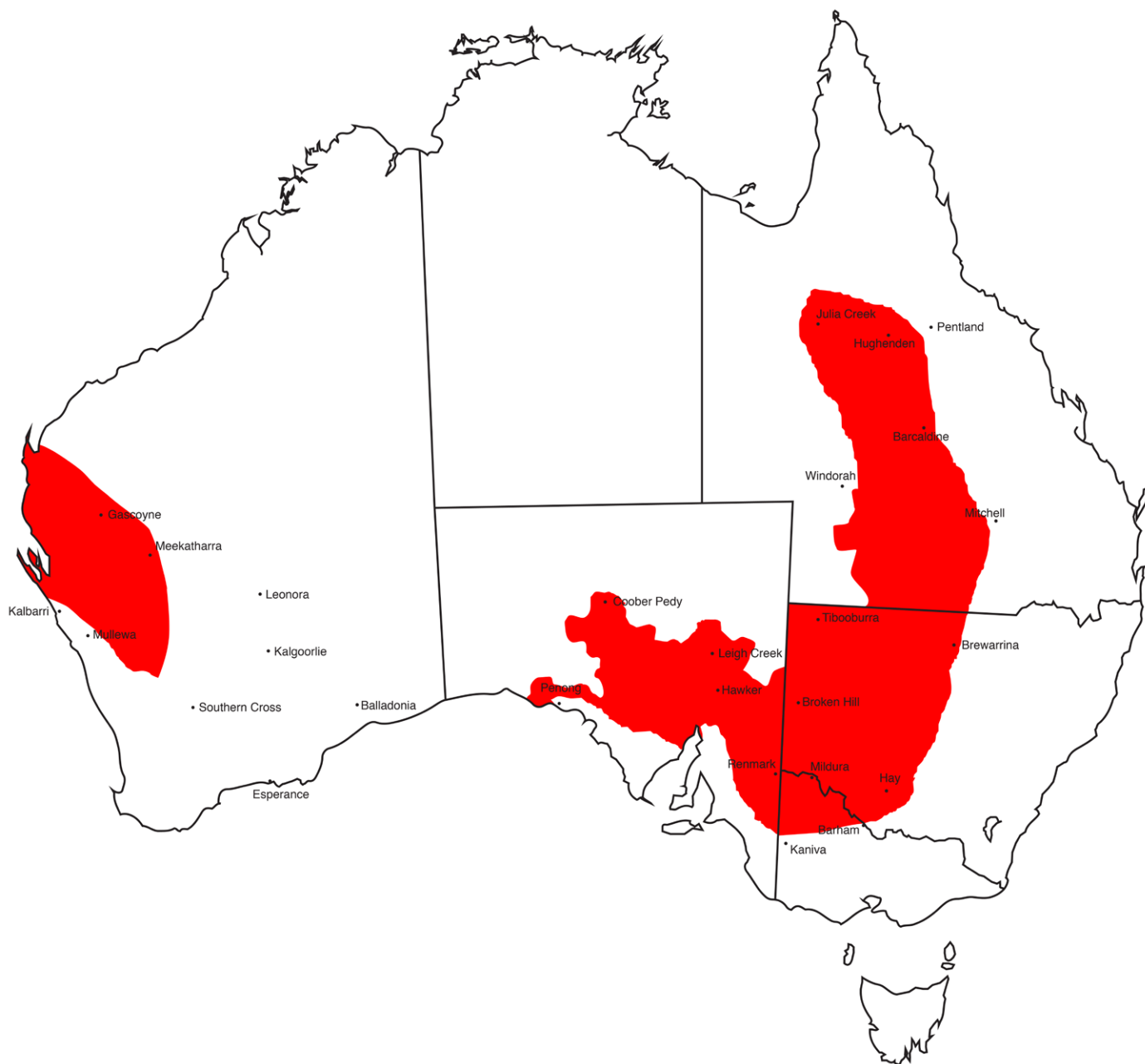
<sup>2</sup> Pasture condition can also be defined by the amount of green herbage mass in kg DM/ha

- Poor: less than 600 kg DM of green herbage mass/ha
- Moderate: 600–1200 kg DM of green herbage mass/ha
- Good: more than 1200 kg DM of green herbage mass/ha

<sup>3</sup> Goat condition can also be defined by body condition scores

- Poor: score 2 or less
- Moderate: score 2.5
- Good: score 3 or better





# Rock Sound Poster Illustrations

## Jan-Feb 2017

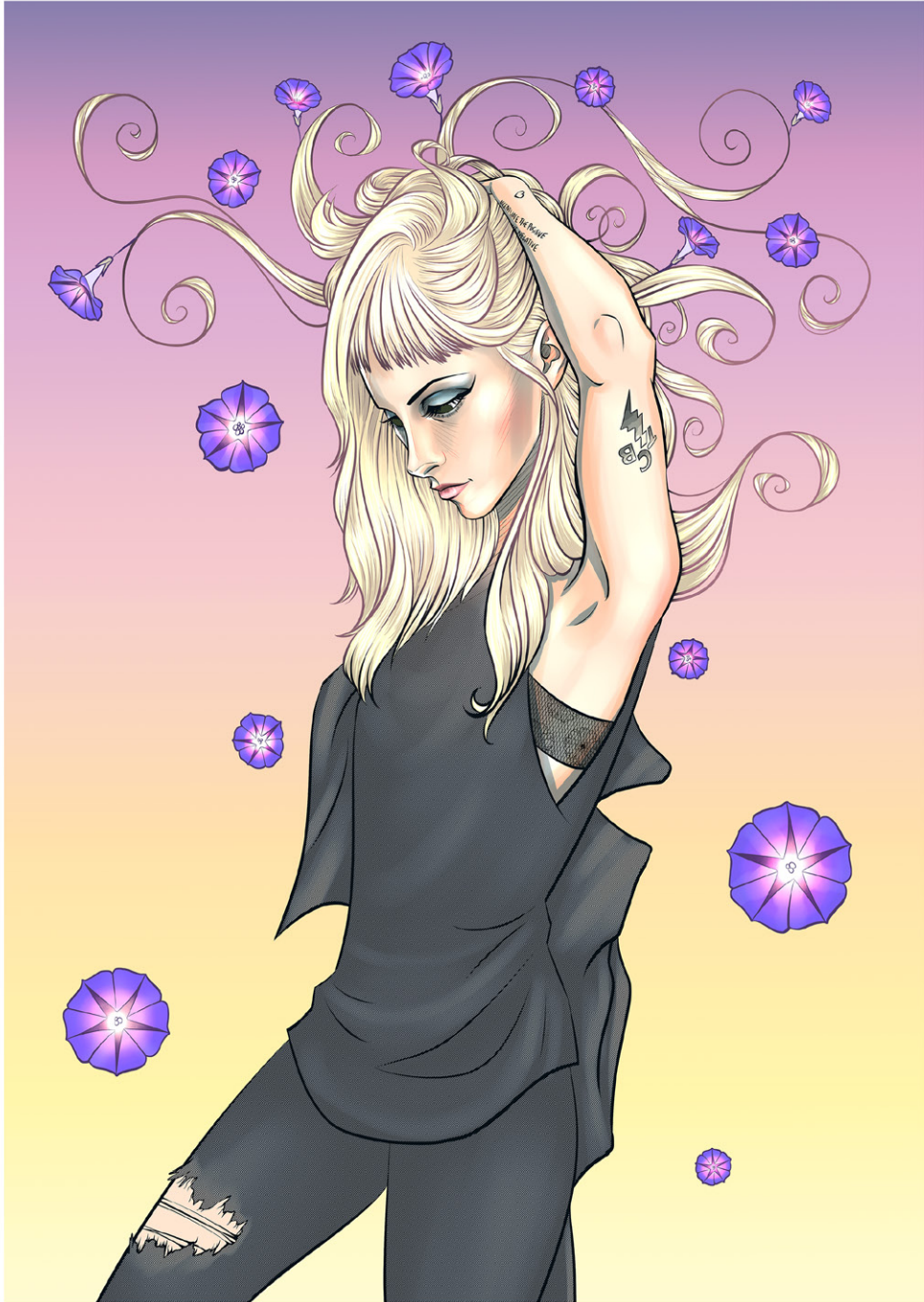
In December, I was approached by the UK-based music magazine Rock Sound to create several illustrations of various bands and musicians for their 2017 February and March issues. Three illustrations were placed in the February issue alongside articles about the musicians. Four were used as posters in the March issue.











# Morelly Graphic Design Work

## Dec 2017 - Jan 2018

In mid-December, I responded to an advertisement by Morelly™ group in Armidale, who offer services related to business growth, for a graphic design position.

Since then I've been doing occasional contract work for them as needed, and my responsibilities with them include logo design, culture book and style guide preparation.





nurture and develop  
early childhood centre



nurture and develop  
early childhood centre



nurture and develop  
early childhood centre

# NEWC Entry

## July 2016

In July 2016, the New England Writers' Club held the inaugural New England Illustration Prize.

Entrants were to submit illustrations of the poem Frosty School Morning by Sophie Masson.

The entries were exhibited in Gallery 126 in Armidale from the 8th - 16th of July.

The winners were announced on the opening night of the exhibition, where my entry came in second place.





Al Graham

# Other Illustrations

## 2015 - 2018

A selection of artworks created in my own time - art for the sake  
of art.







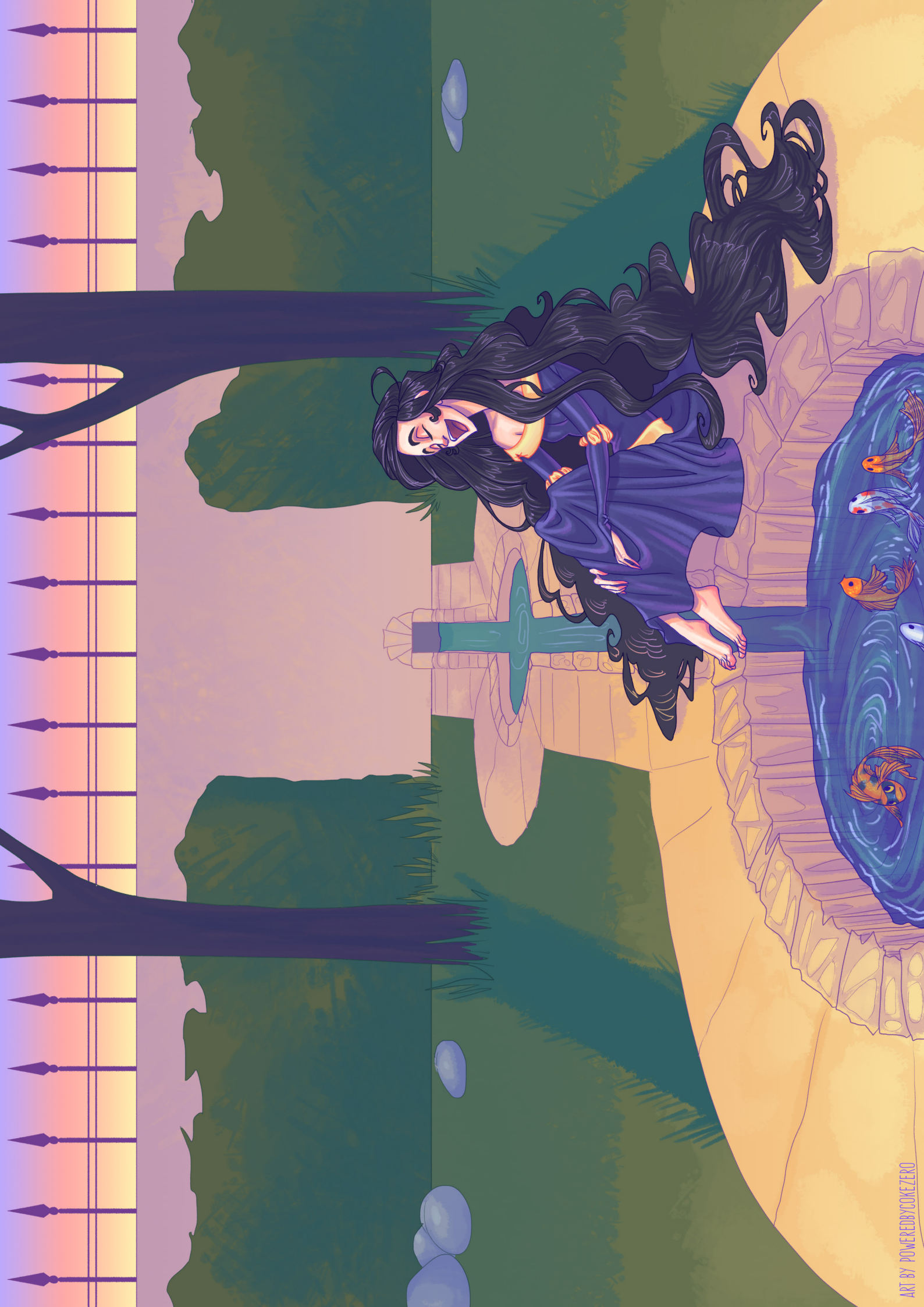


ART BY POWEREDBYCIVILZERO











































# Contact Details:

**email:** grhm\_isn@yahoo.com.au

**ph. number:** 0412931394

**More work:** <http://poweredbycokezero.com>

# THANK YOU